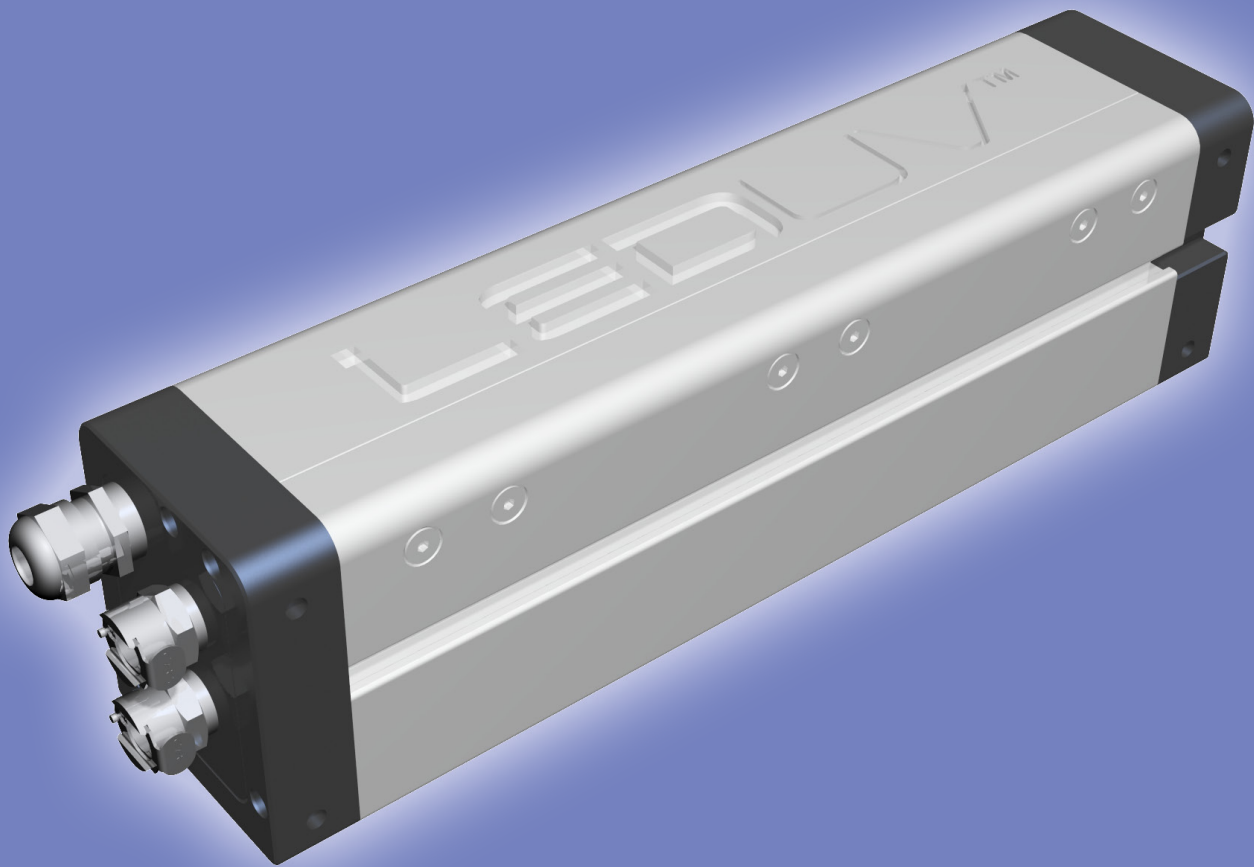


XP SERIES

Product Data Sheet

LEDUV™



Highest intensities

Customizable lengths and working distances

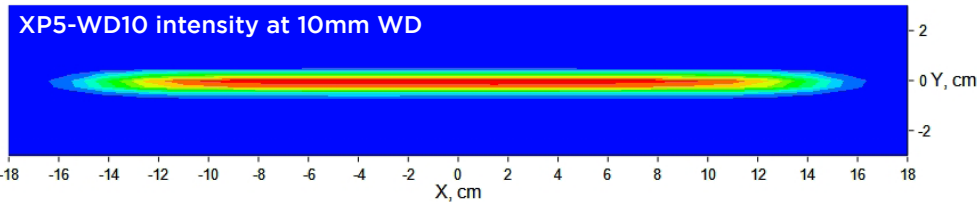
Integration and package flexibility

AIR MOTION SYSTEMS, INC. | AMS UV

674 Highland Drive • River Falls, WI 54022
715 425 5600 TEL • 715 425 5200 FAX
www.airmotionsystems.com

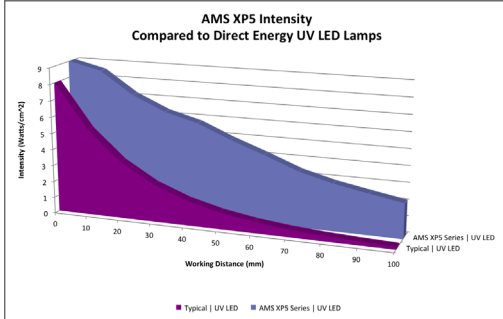
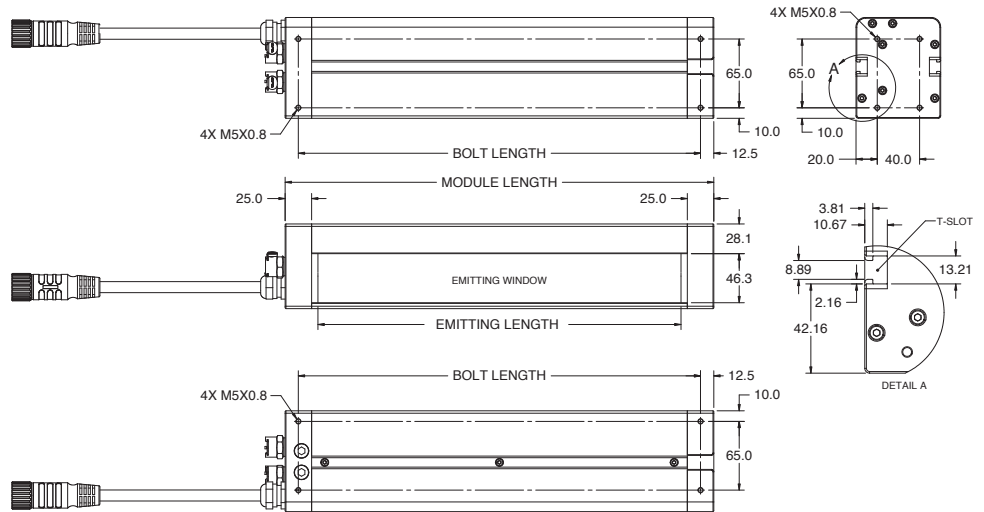
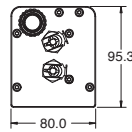


Peak Intensities	XP3	XP5	XP5 WD	Applications
Window	6 W/cm ²	9 W/cm ²	15 W/cm ²	
at 10 mm	5 W/cm ²	8 W/cm ²	14 W/cm ²	Narrow to Wide Webs
at 30 mm	4 W/cm ²	6 W/cm ²	12 W/cm ²	Sheetfed Commercial Print Unit
at 50 mm	3 W/cm ²	5 W/cm ²	9 W/cm ²	Sheetfed Packaging Print Unit
at 80 mm	2 W/cm ²	3 W/cm ²	7 W/cm ²	Sheetfed Commercial Delivery
at 100 mm	1.5 W/cm ²	2 W/cm ²	5 W/cm ²	Sheetfed Packaging Delivery



AMS XP modules employ large chips with patent-pending, adjustable PEAK LED™ Optics to deliver an extremely intense, uniform output of light across the curing media.

XP peak intensities are the highest available, and have an exceptional working distance range compared to conventional direct array or area-based UV LED lamps.



Technical Data	XP3	XP5	XP5 WD	Notes
Working Distances	5 to 150mm Flexible Positioning	5 to 150mm Flexible Positioning	5, 10, 30, 50, 80, 100 Optically Targeted	Custom working distances available
Emitting Lengths	20 to 2050mm	20 to 2050mm	20 to 2050mm	10mm resolutions
Wavelength	385-395nm	385-395nm	385-395nm	365, 375, 395 and 405 options available
Max Linear Power	75 W/cm (190 W/in)	100 W/cm (250 W/in)	100 W/cm (250 W/in)	Electrical Watts
Chip Life	Up to 15,000 hrs	Up to 20,000 hrs	Up to 20,000 hrs	Under recommended conditions
Cooling Method	Chilled Water 5-15 C	Chilled Water 5-15 C	Chilled Water 5-15 C	Recommended
Safety	CE, UL, RoHS	CE, UL, RoHS	CE, UL, RoHS	Available and planned

AMS XP modules may be specified to meet any mechanical curing length. Air-cooled options and alternative wavelengths are available. Please contact us to learn more.



+1 (715) 425-5600 | info@airmotionsystems.com | www.leduv.com

